

Nana — a female Karpov?

NANA IOSELIANI, an attractive 17-year-old girl from the Soviet Union, scythed her way through the Rio women's interzonal tournament to finish an easy first with 14½ out of 16 points. At one stage, with 12 points from 12 games, she was on course for a world record maximum-points victory but was "held" to a draw (two pawns down!) by Elizaveta Polihroniade of Rumania in the next round.

After beating her compatriot and the tournament favourite, Nana Alexandria, in round four, Ioseliani (pronounced Yoseliani) acquired an aura of invincibility. Using little time on the clock, and frequently walking around between moves, she dispatched opponent after opponent with consummate ease in a style that reminds one of world champion Anatoly Karpov.

Leading scores in the Rio women's interzonal were: Nana Ioseliani (USSR), 14½; Zusza Veroci (Hungary), 12; Nana Alexandria (USSR), 11; Elizaveta Polihroniade (Rumania) and Gisela Fischdick (West Germany), 10½.



Murray Chandler

Nana Ioseliani

Standard and better is 4...Nf6 5.Nc3, preventing White from gaining a bind with 5.c4 as in this game.

- | | |
|----------|------|
| 5. c4 | Nf6 |
| 6. Nc3 | Be7 |
| 7. Be2 | O-O |
| 8. O-O | a6 |
| 9. Be3 | b6 |
| 10. f4 | Bb7 |
| 11. Bf3 | Qc7 |
| 12. Rc1 | Nbd7 |
| 13. b3 | Rac8 |
| 14. g4!? | |

Launching a no-nonsense attack in view of Black's passive setup. Kozlovskaya's response is too meek — she must try to get some activity going with 14...Nc5 15.Qc2 e5! although after 16.Nf5 Black cannot proceed 16...Ne6 because of 17.fxe5 dxe5

18.Nxe7 ch Qxe7 19.Bxb6 winning a pawn.

- | | |
|-----------|--|
| 14. . . . | Qb8?!
Ne8
Kh8
Nc7
Qa8
Nc5 |
| 15. g5 | |
| 16. Qe2 | |
| 17. h4 | |
| 18. h5 | |
| 19. Qg2 | |

Black has been steadily migrating over to the queenside, and now Ioseliani easily bursts her way through to Black's king.



- | | |
|----------|---------|
| 20. g6 | f×g6 |
| 21. h×g6 | Rf6 |
| 22. f5 | e×f5 |
| 23. e×f5 | B×f3 |
| 24. Qh3! | Resigns |

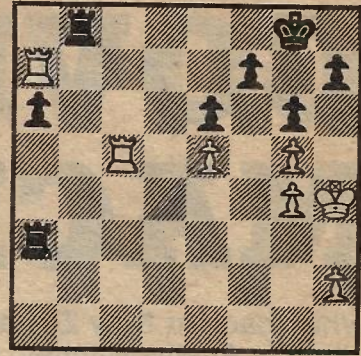
Why recapture the bishop when you can have mate! On 24...h6 25.B×h6 Bg2 26.B×g7 ch! forces checkmate.

I went to Brazil in the dual capacity of journalist and second to the English women's representative Jana Miles. Unfortunately Jana kicked off poorly and finished well below her expected score.

Life was much more interesting with two interzonals (men's and

women's) going on at the same time. It was curious that whereas the men appeared to be safely tucked up in bed — or at least in their rooms — by a reasonable time, many of the women were living it up in Rio's night spots until all hours of the morning.

M. LAZAREVIC (Yugoslavia)



R. CROTTO (USA)

In this position (White to move), with just a few minutes remaining on her clock, United States women's champion Rachel Crotto resigned, which in view of the nasty threat of 1...Rbb3 with unpreventable mate seems completely justified.

But there is a brilliant study-like draw which was pointed out some days later. White should play 1.h3!! Rbb3 2.Rc8 ch Kg7 3.Rg8 ch! (3.R×f7 ch is also possible but this is prettier!) K×g8 4.Ra8 ch Kg7 5.Rg8 ch! K×g8 and White is stalemated!

If Black avoids this stalemate, with say 1...Ra4, we analysed the position to a draw as well, despite Black's extra pawn.

MURRAY CHANDLER